

**1. Identification**Catalogue Number

T294285

Lot Number

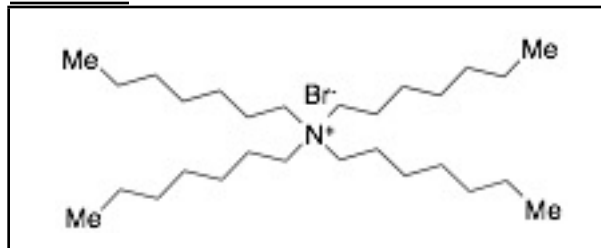
2022-QIU-022

Product Name

Tetraheptylammonium Bromide

Synonyms

N,N,N-Triheptyl-1-heptanaminium Bromide;

StructureCAS Number

4368-51-8

Solubility

Chloroform (Slightly), DMSO (Slightly)

Shipping Condition

This Product Is Stable To Be Shipped At Room Temperature

Molecular Formula $C_{28}H_{60}BrN$ Source of Product

N/A

Long Term Storage Conditions

-20°C, Hygroscopic

Molecular Weight

490.69

Purity

&gt;95%

**2. Warnings**

Hygroscopic

**3. Analytical Information**

| <u>Tests</u>       | <u>Specifications</u>    | <u>Results</u>                 |
|--------------------|--------------------------|--------------------------------|
| Appearance         | White to Off-White Solid | Off-White Solid                |
| NMR                | Conforms to Structure    | Conforms                       |
| Elemental Analysis | Conforms                 | %C: 68.44, %H: 12.49, %N: 3.04 |
| HPLC Purity        | >95%                     | 99.58% (ELSD)                  |
| MS                 | Conforms to Structure    | Conforms                       |
| Bromide Content    | Report Result            | 14.6%                          |

Additional Information

N/A

Purity is based on the analytical results of the tests performed. NMR and Elemental Analysis (if available) may have an accuracy of  $\pm 2\%$ . Isotopic purity is based on mass distribution observed.  
The contents of the specifications are subject to change without advance notice, and the specification values displayed here are the most up to date values.

**4. Signatures**

| <u>Reviewed by</u>                       | <u>Reviewed by</u>                          | <u>C of A Approved by</u>                          | <u>Test Date</u> | <u>Retest Date</u> |
|--|---|--|------------------|--------------------|
|  |   |  | 10/26/2022       | 10/24/2026         |
| Henry Tieu<br>Product Quality Specialist | Toni Rantanen<br>Manager, Quality Assurance | Christina Gouliaras<br>Quality Assurance Associate |                  |                    |